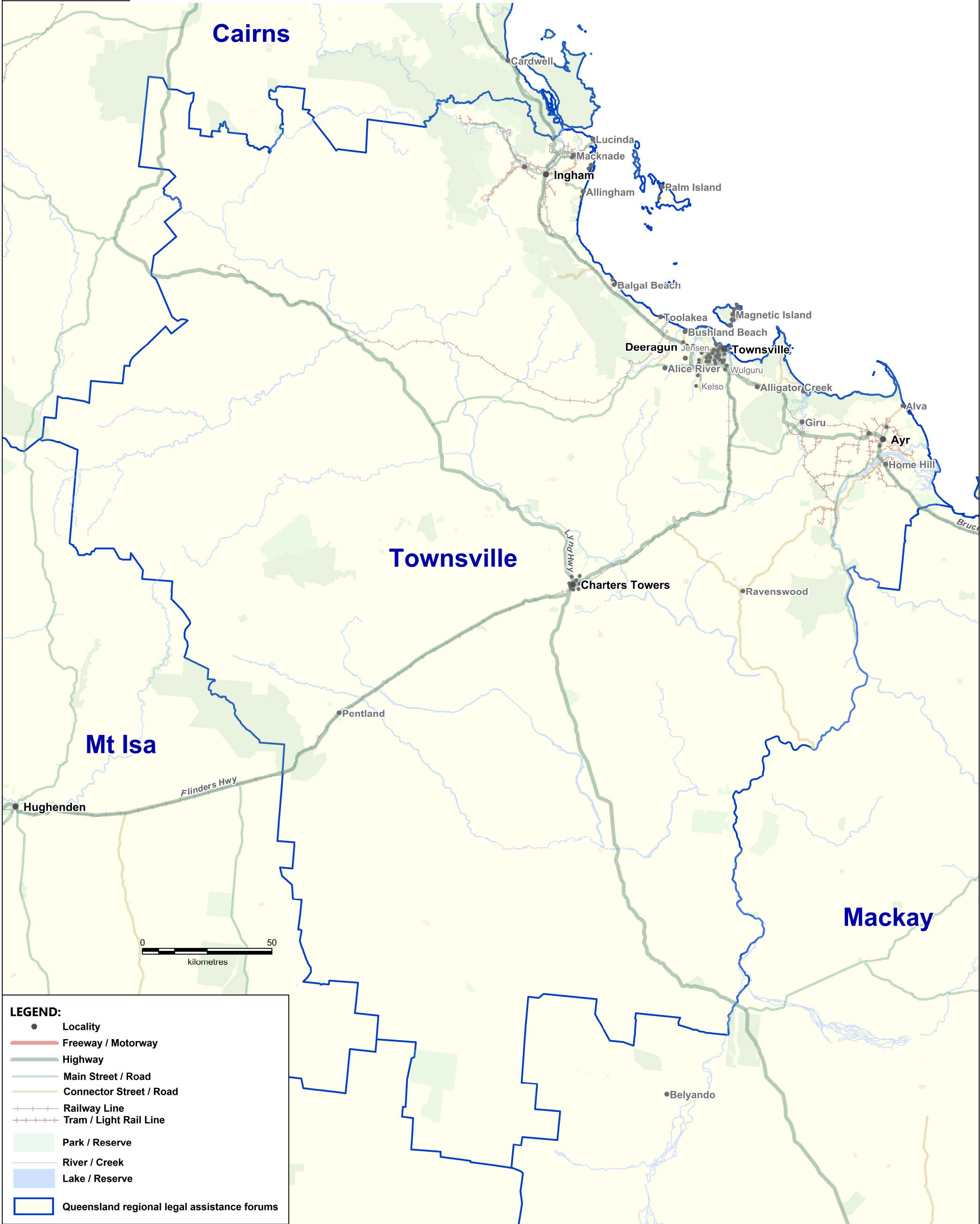


Queensland regional legal assistance forums - Townsville



© Commonwealth of Australia



Creative Commons

With the exception of the Commonwealth Coat of Arms, and to the extent that copyright subsists in a third party, this publication, its logo and front page design are licensed under a Creative Commons Attribution-NonCommercial-NoDerivs 3.0 Australia licence. In essence, you are free to copy and communicate this work in its current form for all non-commercial purposes, as long as you attribute the work to the author and abide by the other licence terms. The work cannot be adapted or modified in any way. Content from this publication should be attributed in the following way: Author(s), Title of publication, Series Name and No, Publisher, Date. To the extent that copyright subsists in third party quotes it remains with the original owner and permission may be required to reuse the material. Inquiries regarding the licence and any use of the publication are welcome to webmanager@aph.gov.au.

Except as required by law, the Commonwealth will not be liable for any loss, damage, expense or cost (including any incidental or consequential loss or damage) incurred by any person or organisation arising out of use of, or reliance on, this map. Material used 'as supplied': Sources: Geoscience Australia; Australian Bureau of Statistics; Australian Electoral Commission; StreetPro © 2012 Pitney Bowes Software Pty Ltd. All Rights Reserved. Derivative material: Based on material supplied by: Geoscience Australia; Australian Bureau of Statistics; Australian Electoral Commission. RT75692 LS20160525