

Still looking for answers

Domestic violence calls to surge

EMMALINE STIGWOOD
TOM SNOWDON

STRETCHED frontline domestic violence services are preparing for a surge in calls for help following this week's murder of Teresa Bradford.

Women's Legal Service coordinator Angela Lynch said this week's focus on domestic violence would hit home with other women.

But with the service already unable to answer 11,000 calls to its hotline last year, it will struggle to cope.

"We want politicians to be talking about this issue but when they do that, we need to make sure we have the resources and services on the frontline to deal with the demand that follows," she said.

"It's really important because this week there will be women who self-identify as being in a violent relationship and who hear and see that there are people who will believe them and help them if they come forward.

"But we had better have support on the other end of the line because separation is the most dangerous time for women."

Mrs Bradford was murdered by her husband, who had been released on bail after being charged with assaulting her in her Pimpama home.

Ms Lynch said offenders often believed they could get away with breaching orders because incidents often were not followed up.

The number of breaches in Queensland jumped 32 per cent in the year to March 31, 2016, to 21,134. Justice Department figures reveal it was up from 16,039 a year earlier.

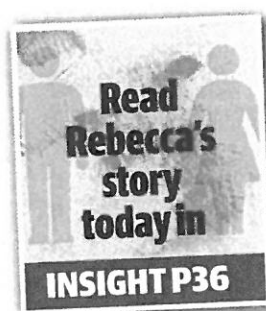
Domestic violence survivor Rebecca Henry said seven domestic violence orders made against her former partner from 2004 onwards were basically ineffective.

"It is honestly just a piece of paper," she said. "That's what most women think.

"It doesn't stop someone coming to your house or trying to find you."

Ms Henry survived a brutal attack at the hands of her partner outside their home in Mt Gravatt in October 2014, after one of the DVOs was in place.

Her throat was slashed before her former partner stole her car, and took off on a dangerous southbound escape which ended when he crashed near Coomera.





SURVIVOR:
Rebecca Henry
escaped a
violent
relationship
and her
former partner
is now in jail.
Picture: Jamie
Hanson