

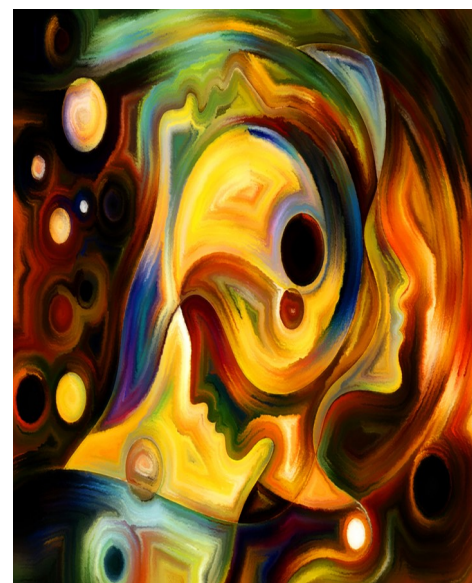


## Digging Deeper

### Risk assessment and strengths-based family work

**A one-day workshop on 02 November 2017**

Is risk assessment still relevant in child protection when you work from a strengths-based framework with families? Of course! Assessing risk remains at the core of protecting children and young people. Yet what some find tricky is how to integrate the risk assessment process with a strengths-oriented approach to practice. This workshop 'digs deeper' into this question, reviewing contemporary understandings of the concepts and skills critical to risk assessment and exploring how to successfully enact these in practice while working to engage with families around the safety of their children. The complexities of this work are enormous, as is the responsibility to 'get it right'. This workshop provides the opportunity to explore your understanding and approach to risk assessment and where it fits with frameworks for inclusive engagement and work with families. It untangles and clarifies the relationship between assessing risk and identifying strengths, as workers assist families to identify their own needs and bring about change.



**Who should attend?** Frontline child safety workers, team leaders and managers, in statutory and community services. Child Safety, Family and Child Connect, Intensive Family Support services, Family Wellbeing Services and any personnel across government and community sectors who have responsibility for risk assessment in the context of working to support families.

#### You'll learn more about:

- How to integrate understanding of risk and family strengths in developing a relationally grounded approach to practice
- Use of 'complexity theory' in digging deeper into practice and examining the complexities around assessing risk, strengths and needs
- Making practical use of motivation and the other key drivers of change in complex circumstances
- Practical application of knowledge from neuroscience, appreciative inquiry and strengths practice, in working with families to achieve safe outcomes for children
- Applying the critical elements of relational practice when facilitating engagement in intense and tricky situations.

#### Next scheduled

**When:** 02 November 2017

**Time:** 9.30 – 4.00

**Place:** Airport International Motel,  
528 Kingsford Smith Dve, Hamilton

**Cost:** \$253

To register  
Online:  
[www.efac.com.au/schedule](http://www.efac.com.au/schedule) or  
Email: [enquiries@efac.com.au](mailto:enquiries@efac.com.au)