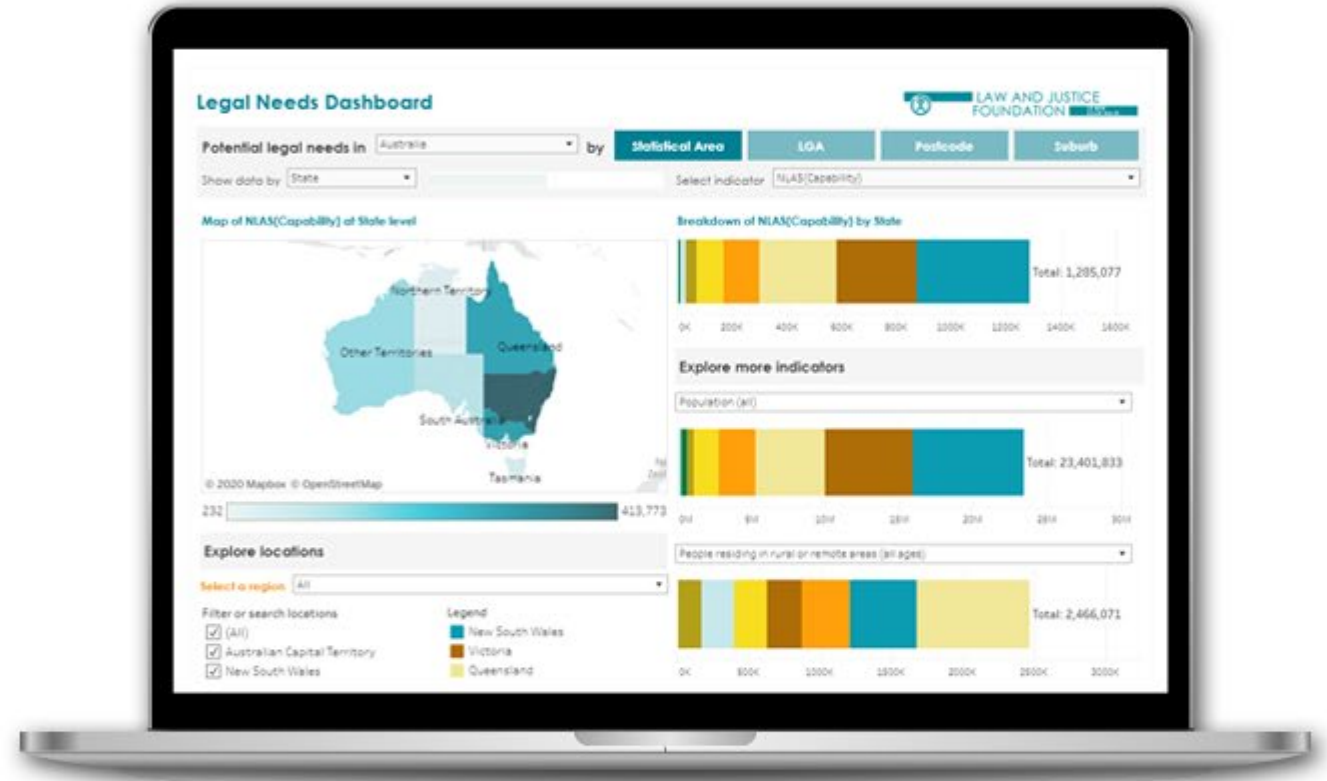


***Estimating Legal Needs and supporting  
legal assistance planning:  
the Law and Justice Foundation's Legal  
Needs Dashboard(s)***

**CLC (Q) Webinar series**

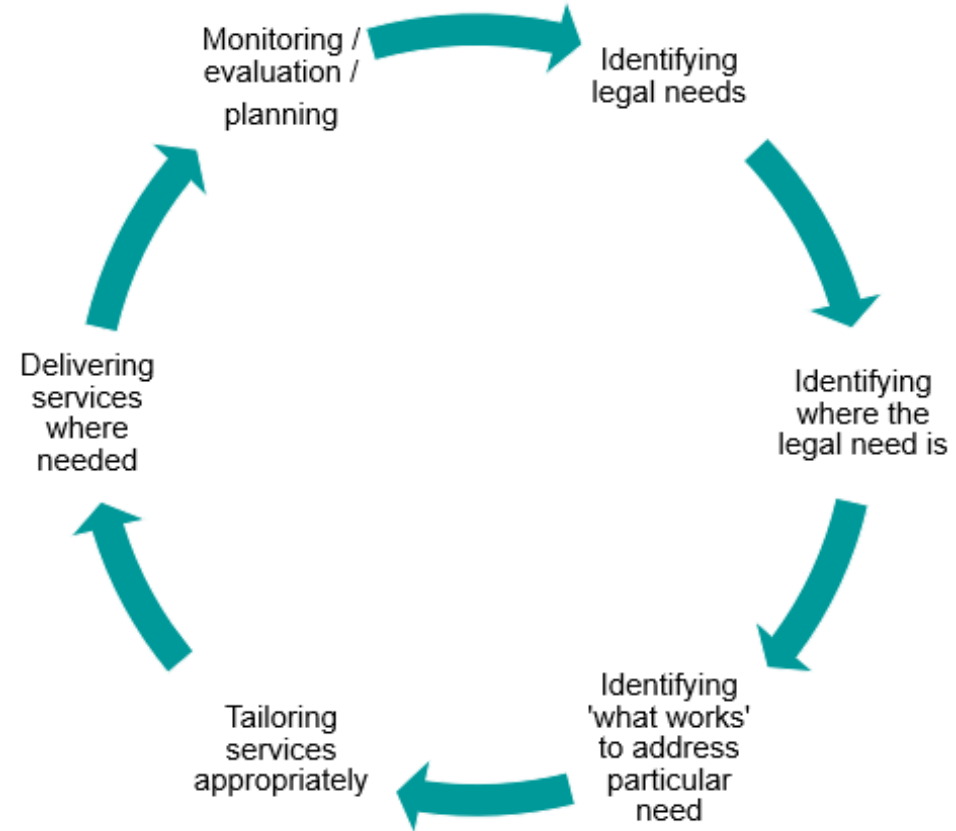
Geoff Mulherin and Delphine Bellerose

Wednesday 29 September 2021  
11.30am-12.15pm (AEDT)



## A few things before we start...

- Supporting legal assistance sector
  - Range of information needs



*The Planning Cycle*



# How to estimate the level and nature of legal need in your jurisdiction and its relevant regions?

Not one robust measure or indicator of the extent of legal need, identified by various geographical areas in Australia.



## How to estimate legal needs?

### Legal Needs Surveys

- ✓ Identify legal need in the community
- ✓ Identify vulnerability of different groups
- ✓ Large samples, advanced statistical analysis
- ✓ Generalise findings to the general population
- ✗ Small geographic areas
- ✗ Cost effective regular update



# How to estimate legal needs?

## Legal Needs Surveys

### Official data – population level datasets

#### Census

- ✓ Reliable population count
- ✓ Small areas
- ✓ Readily available and cost effective
- ✗ Need for legal assistance

#### Indicators of disadvantage (SEIFA)

- ✓ Identify disadvantage
- ✓ Small areas
- ✗ Count of people
- ✗ Legal need



# How to estimate legal needs?

## Legal Needs Surveys

Official data – population level datasets

### Targeted data/knowledge

- ✓ Focus on legal needs
- ✓ Specific legal issue or population
- ✓ Contextual factors
- ✓ Deep engagement with communities
- ✗ Representative of the general population
- ✗ Findings transferable to other areas



# How to estimate legal needs?

## Legal Needs Surveys

Official data – population level datasets

Targeted data/knowledge

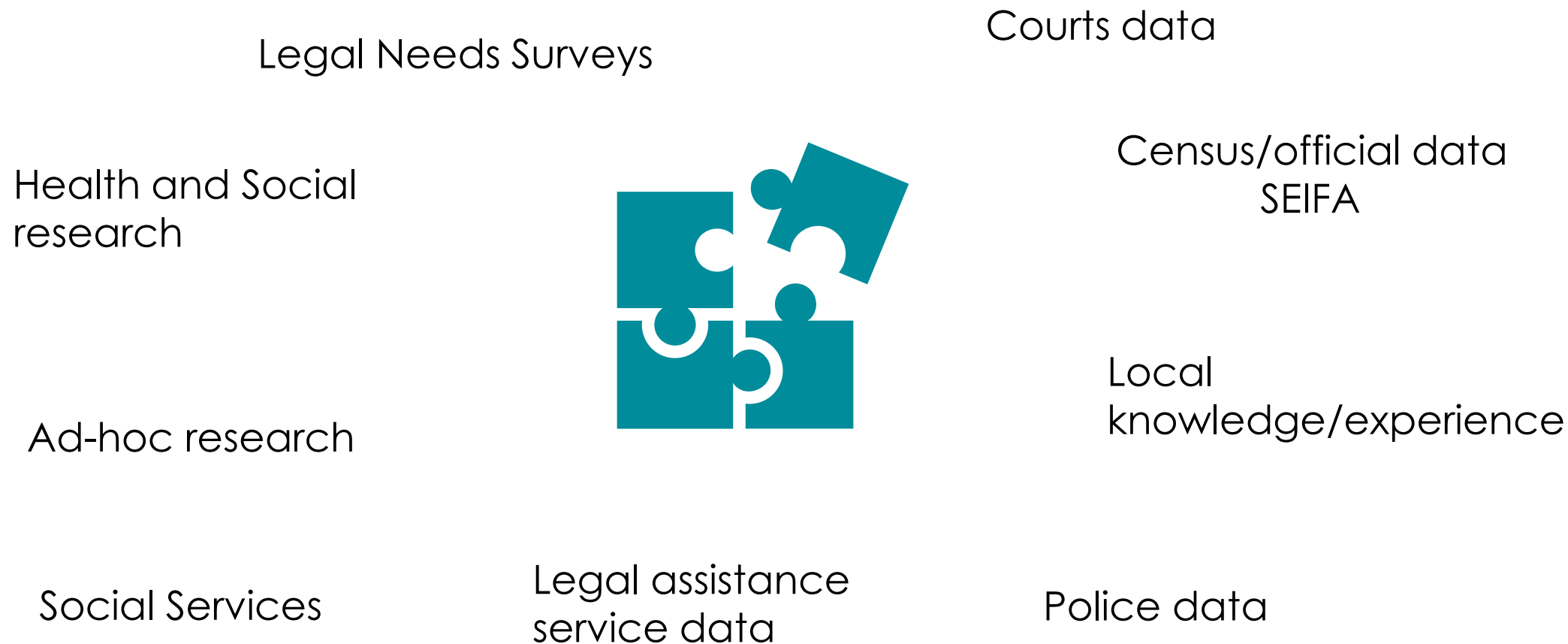
### Service data

administrative data collected by legal assistance providers

- ✓ Services delivered, client profile
- ✗ Legal need in the community



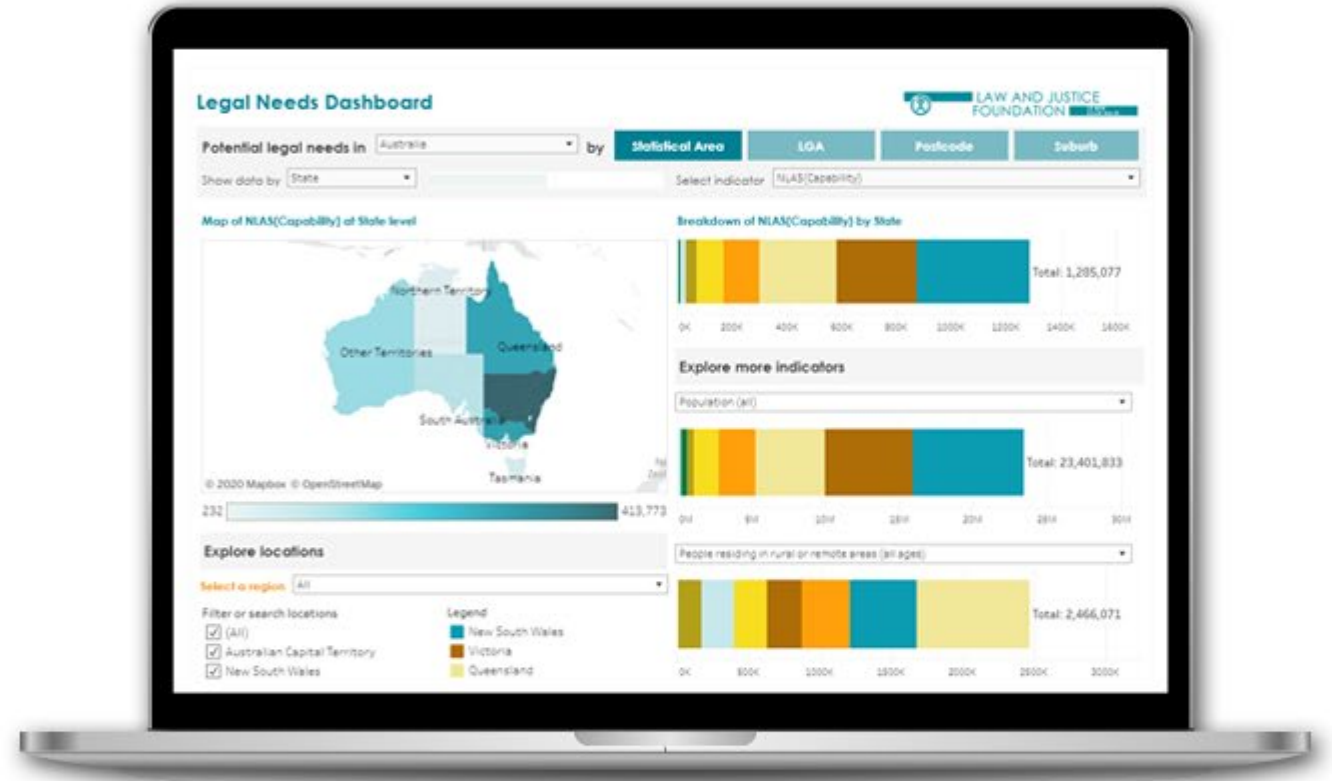
# How to estimate legal needs?





# National Legal Needs Dashboard

- Collection of data sources
- Identify where legal needs may exist
- Various geographies
- Planning at all levels



# Your needs?

- What data / information / maps would be useful?
- Various datasets use different geographies and mapping from one geography to another can be tricky and labour intensive.
- Analysing/displaying data by 100s of suburbs is not practical:
  - Continue using LGAs for closest approximate area?
  - Create customised suburb clusters?

→ A more flexible tool to identify potential legal need: Legal Needs Dashboards

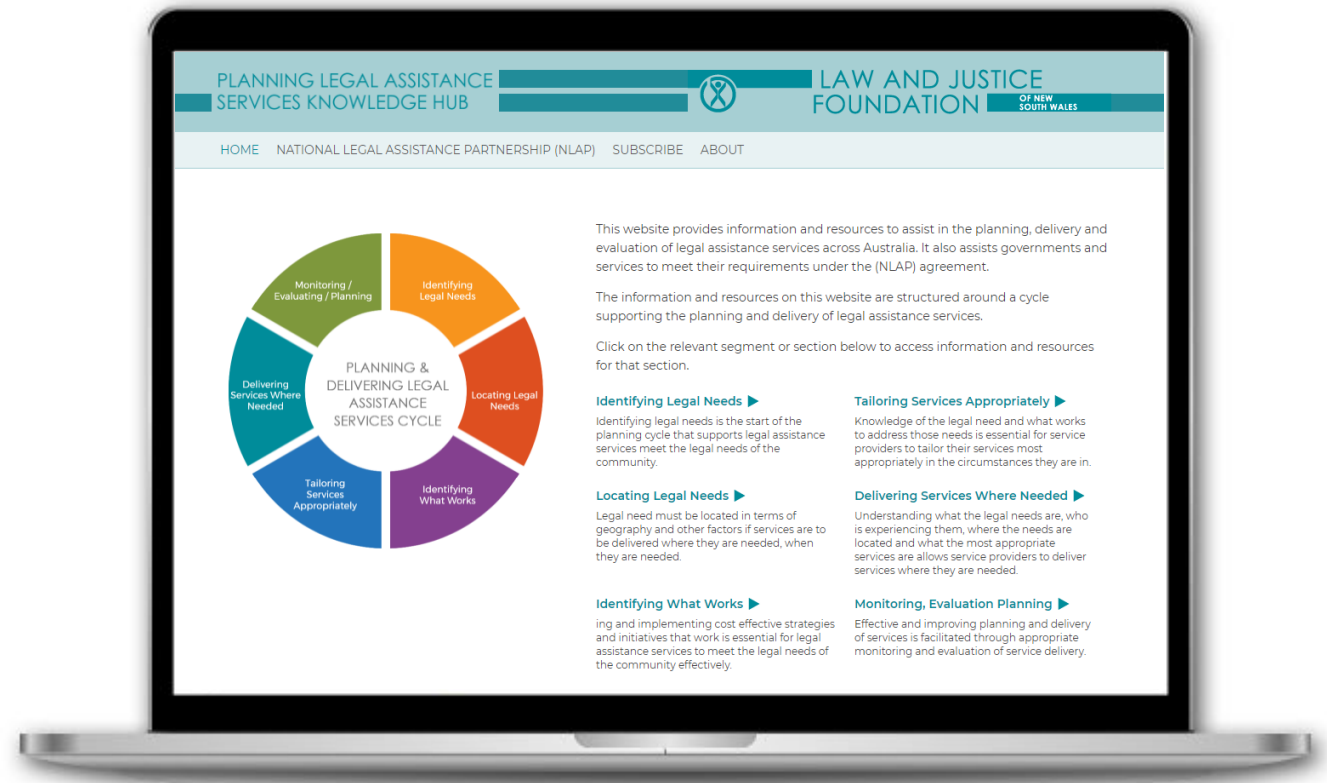
Not yet an agreement to share service data from all providers

→ Working towards a (possible) NSW pilot dashboard(s) that allows for analysis of legal needs indicators and service delivery data side by side – first for individual service.



# Knowledge hub for planning legal assistance

A website to provide information and resources to assist in the planning, delivery and evaluation of legal assistance services across Australia as well as assisting governments and services to meet their requirements under the NLAP agreement.



(Beta version – all content is for demonstration purposes only)



# Questions?

- **Email** us at [datadigest@lawfoundation.net.au](mailto:datadigest@lawfoundation.net.au)
- **Access** the Dashboards, introductory videos and getting started tutorials:
  - [Legal Needs Dashboard](#)
  - [Criminal Finalisations Dashboard](#)
- **View** our video on Estimating Legal Needs [here](#)
- **Subscribe** to our *Research Alerts* and *Plain Language Law (PLL)* [here](#)

