



WOMEN'S
LEGAL CENTRE ACT

Integrated Practice Secret: Partnership of Equals

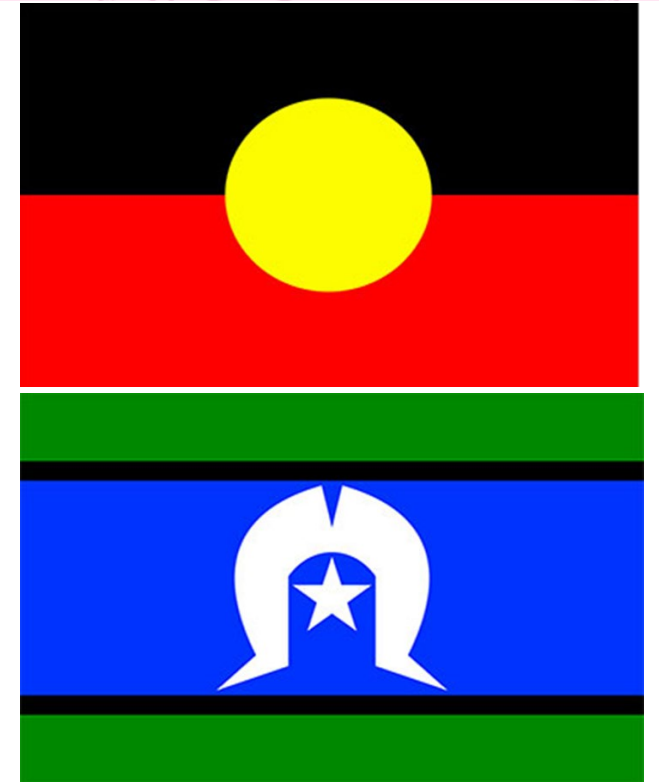
Presented by:
Kasumi Ejiri
Head of Social Work Practice





WOMEN'S
LEGAL CENTRE ACT

The Women's Legal Centre acknowledges the traditional custodians of the lands on which we work. We recognise this land was never ceded and the experience of colonisation and loss continues to affect the lives of Aboriginal and Torres Strait Islander women and communities today. Despite this, Aboriginal and Torres Strait Islander people's connection to land, sea and community is strong and continuing. We pay our respects to elders past and present, and to Aboriginal and Torres Strait Islander children and future leaders, for they hold the memories, the traditions, the culture and the hopes of First Nations people.





WOMEN'S
LEGAL CENTRE ACT



WOMEN'S
LEGAL CENTRE ACT

Reflect on our existing biases and assumptions

Bleeding heart, Touchy feely, Lefty, Meddlers

Social workers are “do gooders” that want to rescue people

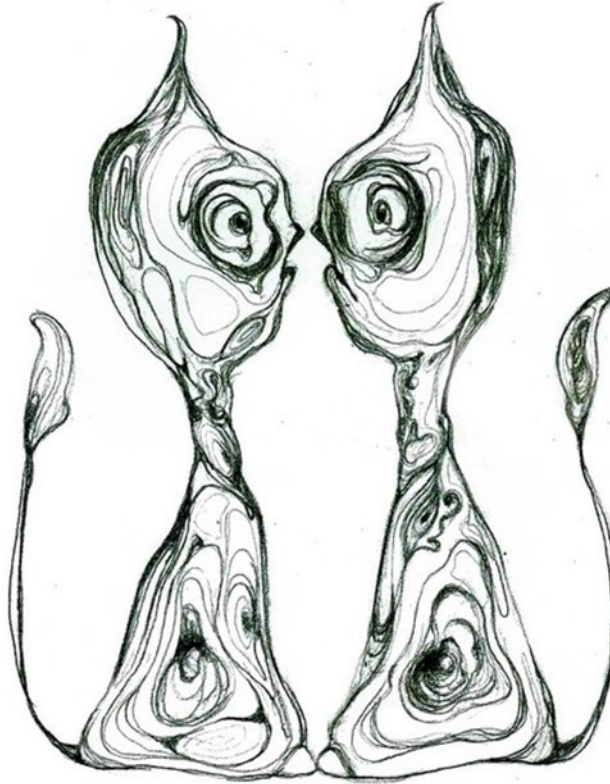
Social Workers don't hold clients accountable and excuses behaviour

Anyone can call themselves a social worker

Social Workers take peoples children away And interfere in peoples's lives

Social workers only work with Centrelink recipients

It's not a real profession



Unfeeling, Arrogant, Risk Adverse, Alpha types

Lawyers are only doing it for the money

Lawyers are always trying to cheat you

Lawyers need to be aggressive to be good

Lawyers feed off people's tragedies

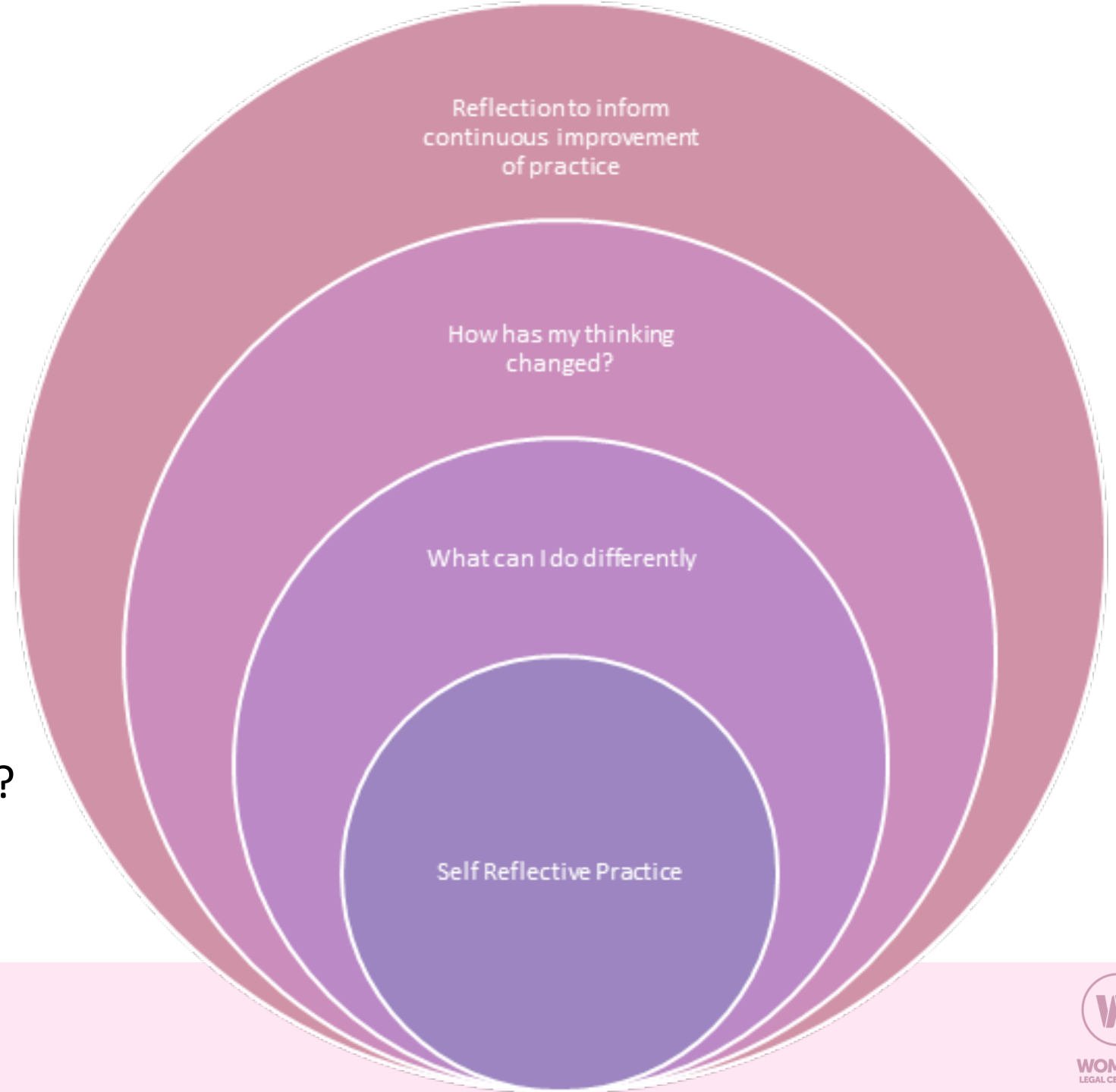
Lawyers are manipulative

Good lawyers only care about the case and not the person

Reflective practice

To continuously strengthen our integrated practice

What worked well?
What caused conflict?
What could have I have done differently?
What assumptions did I make?
How did I influence the situation?
How did I use my professional power?
How has my thinking changed?



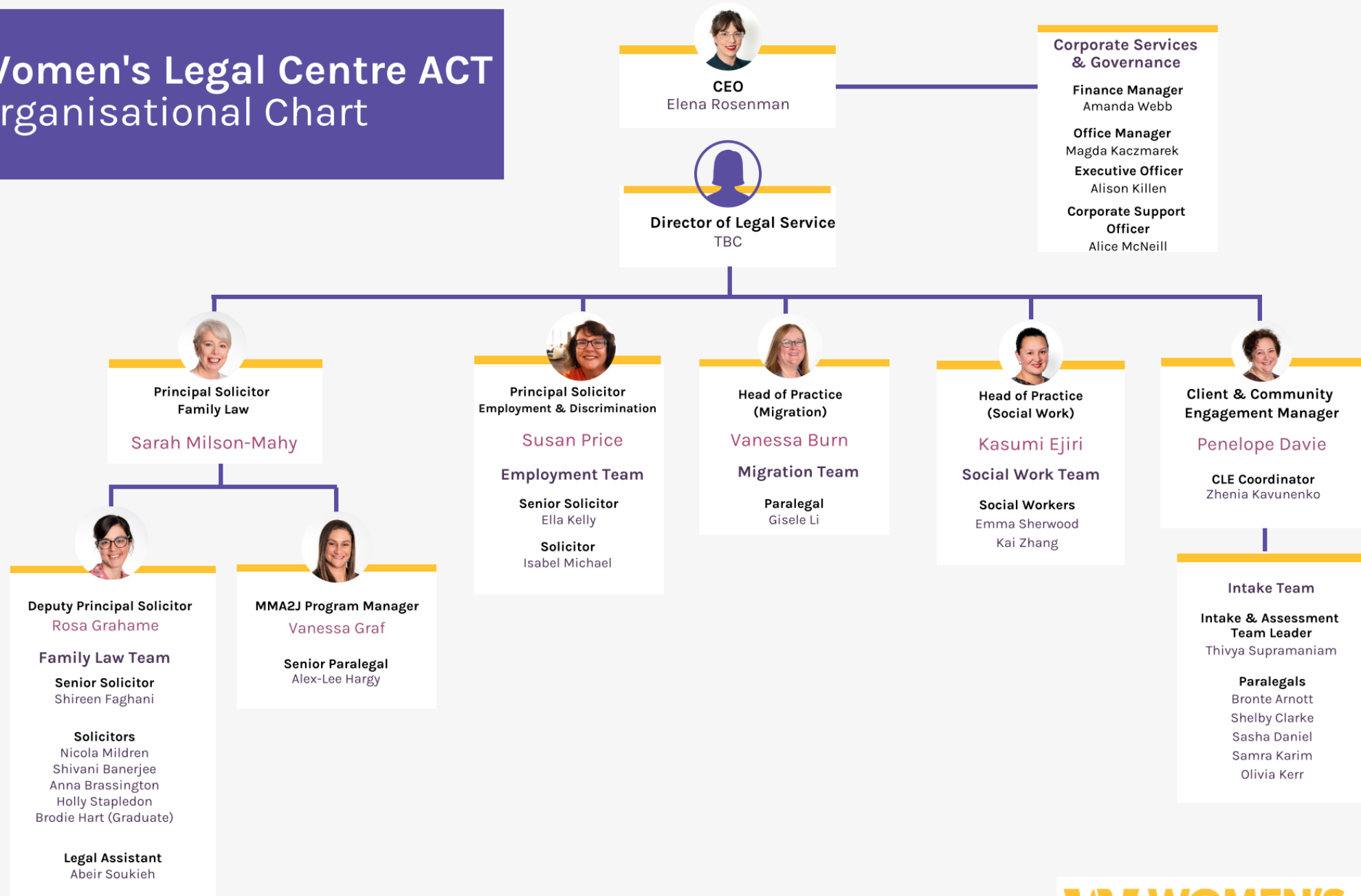


WOMEN'S
LEGAL CENTRE ACT

**STRONGER.
SAFER.
BETTER.**



Women's Legal Centre ACT Organisational Chart





WOMEN'S
LEGAL CENTRE ACT

Thank you

Kasumi Ejiri
kejiri@wlc.org.au